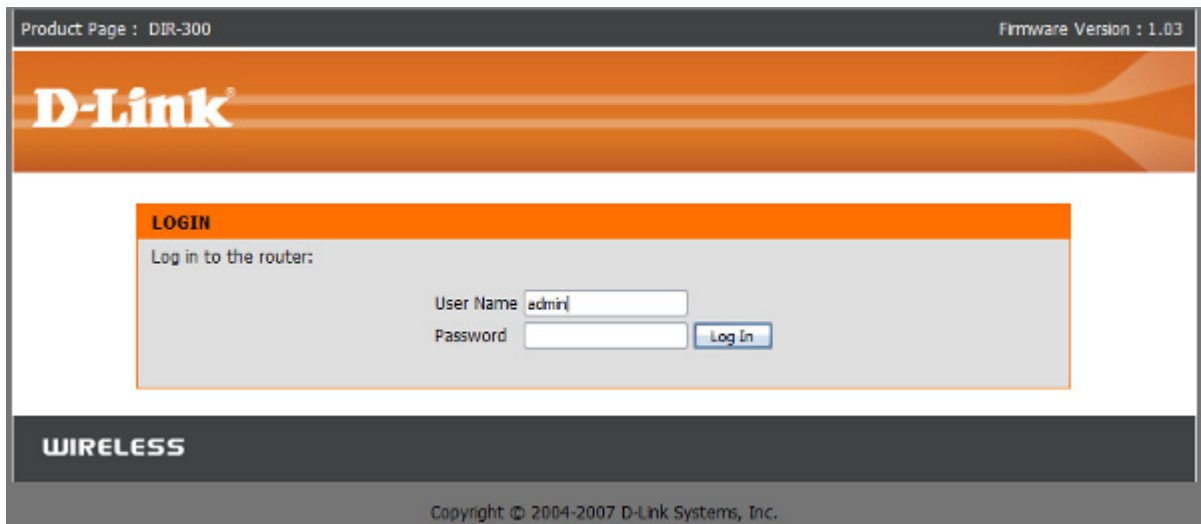


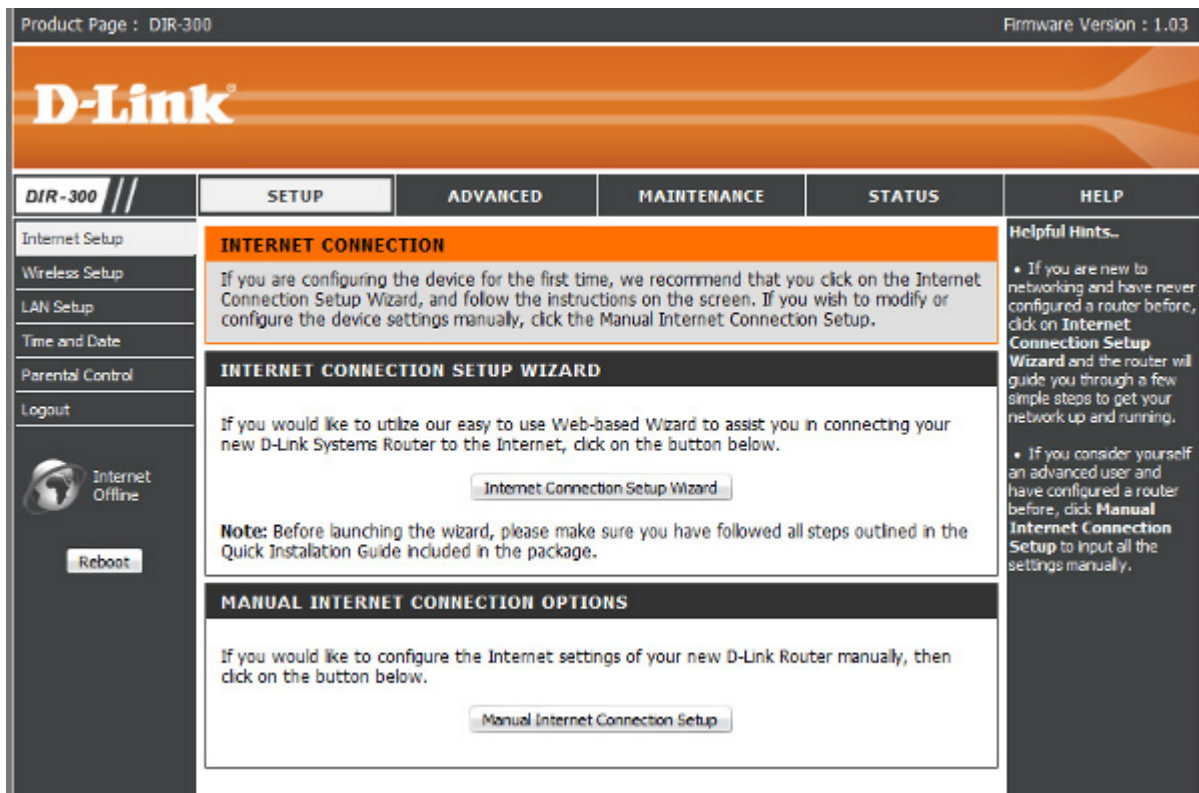
Інструкція по налаштуванню маршрутизаторів D-Link Dir-100/300

1. Підключіть кабель до порту «Internet», комп'ютери до портів - Lan 1, 2, 3 або 4
2. Увімкніть роутер в розетку.
3. У мережевих налаштуваннях IP і DNS повинні бути налаштовані на автоматичне отримання.

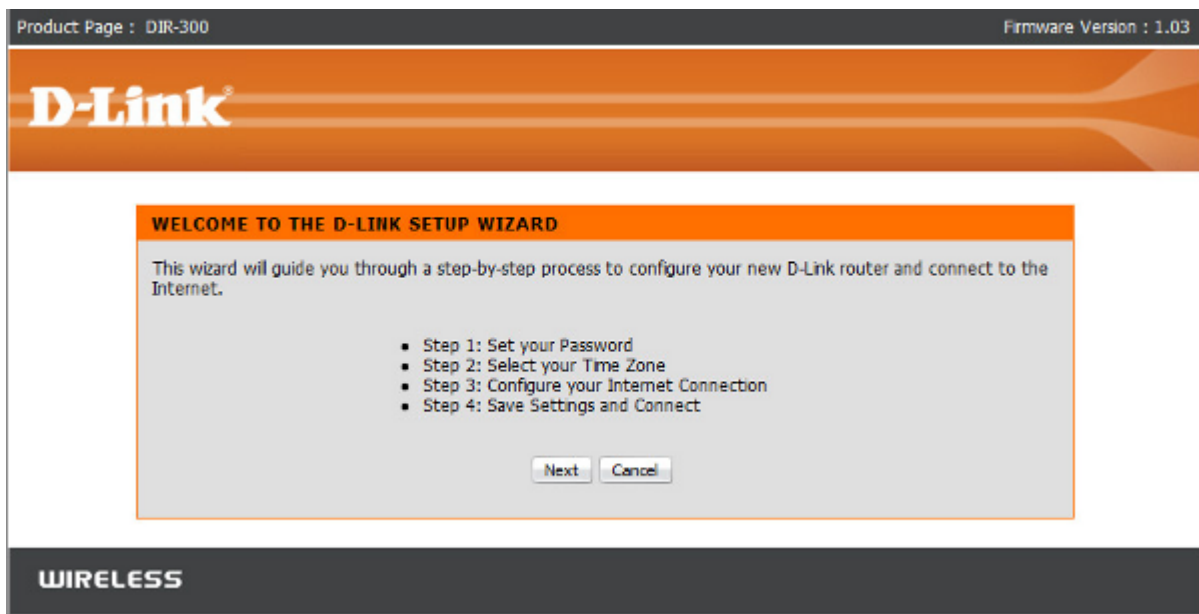
Для зовнішнього з'єднання з інтернетом потрібно зайти в WEB-інтерфейс управління маршрутизатора. Щоб туди потрапити запустіть будь-який доступний WEB-браузер і введіть в рядку адреси IP-адресу маршрутизатора. Введіть http:// і IP-адресу, 192.168.0.1 (192.168.1.1) в адресний рядок браузера. При вході користувачеві буде запропоновано ввести ім'я користувача і пароль для доступу до менеджера налаштувань. За замовчуванням логін «admin» пароль порожній. З'явиться нове вікно WEB-інтерфейсу керування.



4. Натискаємо Internet Connection Setup Wizard (Мастер установки Интернет-соединения)

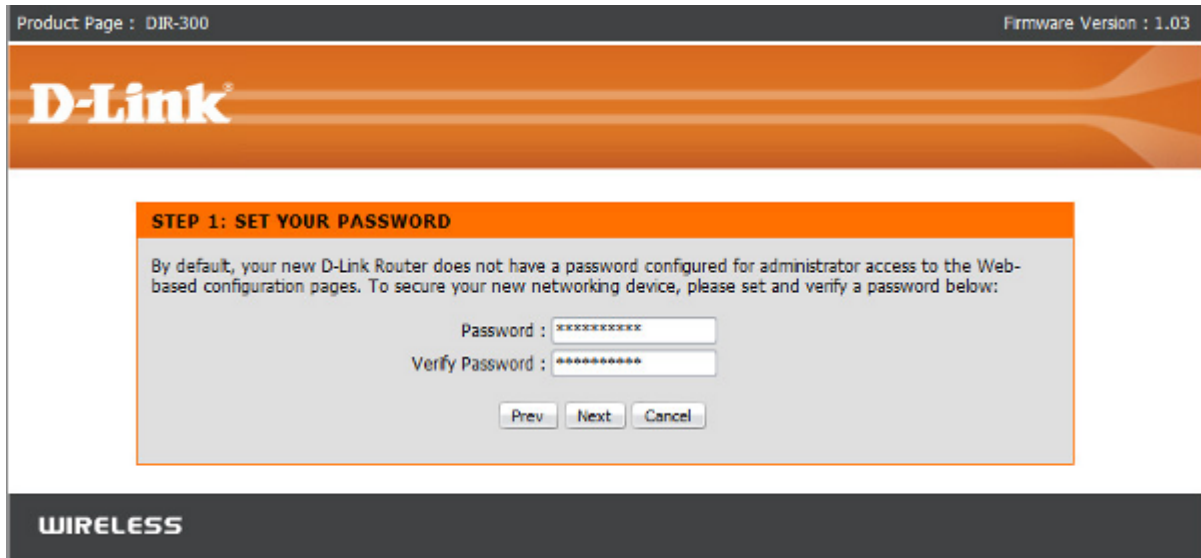


5. З'являється вікно D-Link Setup Wizard (Майстер швидкого налаштування). Натискаємо Next (Далі).



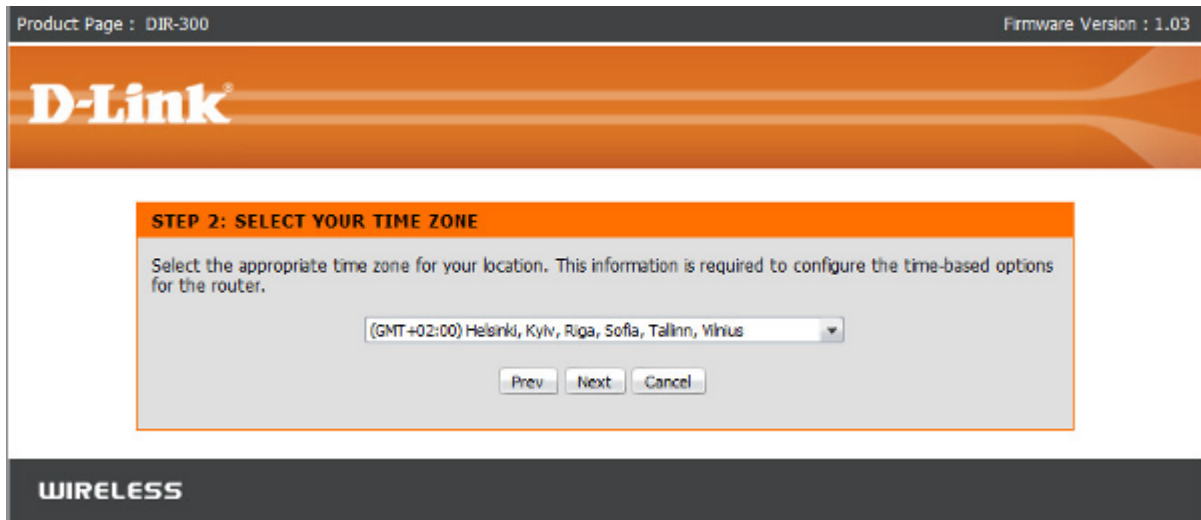
6. Змінюємо пароль доступу до WEB-інтерфейсу керування маршрутизатором (можна його залишити колишнім, але для підвищення безпеки

рекомендується його змінити, користувач admin залишається колишнім!)
Натискаємо Next (Далі).



The screenshot shows the D-Link web interface for a DIR-300 router. At the top, it says "Product Page : DIR-300" and "Firmware Version : 1.03". The D-Link logo is prominently displayed. Below the logo, there is a section titled "STEP 1: SET YOUR PASSWORD". The text in this section reads: "By default, your new D-Link Router does not have a password configured for administrator access to the Web-based configuration pages. To secure your new networking device, please set and verify a password below:". There are two input fields: "Password :" and "Verify Password :", both containing asterisks. Below the fields are three buttons: "Prev", "Next", and "Cancel". At the bottom of the page, the word "WIRELESS" is written in a dark bar.

7. Вибираємо часову зону.



The screenshot shows the D-Link web interface for a DIR-300 router. At the top, it says "Product Page : DIR-300" and "Firmware Version : 1.03". The D-Link logo is prominently displayed. Below the logo, there is a section titled "STEP 2: SELECT YOUR TIME ZONE". The text in this section reads: "Select the appropriate time zone for your location. This information is required to configure the time-based options for the router." There is a dropdown menu showing "(GMT+02:00) Helsinki, Kyiv, Riga, Sofia, Tallinn, Vilnius". Below the dropdown are three buttons: "Prev", "Next", and "Cancel". At the bottom of the page, the word "WIRELESS" is written in a dark bar.

8. Далі вибираємо тип підключення до провайдера. Вибираємо другий пункт Username / Password Connection (PPPoE) (Підключення по Імені користувача / пароль (PPPoE))

STEP 3: CONFIGURE YOUR INTERNET CONNECTION

DHCP Connection (Dynamic IP Address)
Choose this if your Internet connection automatically provides you with an IP Address. Most Cable Modems use this type of connection.

Username / Password Connection (PPPoE)
Choose this option if your Internet connection requires a username and password to get online. Most DSL modems use this connection type of connection.

Username / Password Connection (PPTP)
Choose this option if your Internet connection requires a username and password to get online. Most DSL modems use this connection type of connection.

Username / Password Connection (L2TP)
Choose this option if your Internet connection requires a username and password to get online. Most DSL modems use this connection type of connection.

Username / Password Connection (Bigpond)
Choose this option if your Internet connection requires a username and password to get online. Most DSL modems use this connection type of connection.

Static IP Address Connection
Choose this option if your Internet Setup Provider provided you with IP Address information that has to be manually configured.

Russia PPTP (Dual Access)
Choose this option if your Internet connection requires a username and password to get online as well as static route to access Internet service provider's internal network. Certain ISPs in Russia use this type of connection.

Russia PPPoE (Dual Access)
Choose this option if your Internet connection requires a username and password to get online as well as static route to access Internet service provider's internal network. Certain ISPs in Russia use this type of connection.

9. Вводимо облікові дані видані провайдером (username (логін), пароль і підтвердження пароля ще раз пароль.) Натискаємо Next (Далі). Увага! Ім'я сервісу потрібно залишити пустим! Connection mode select виставляємо у позицію Always. Інші доступні налаштування залишити беззмінними!

Завершуємо роботу з майстром. Натискаємо Save Settings. Можливо буде потрібно перезавантаження маршрутизатора.

Internet Setup

Wireless Setup

LAN Setup

Time and Date

Parental Control

Logout

Internet Offline

Reboot

INTERNET CONNECTION

Use this section to configure your Internet Connection type. There are several connection types to choose from: Static IP, DHCP, PPPoE, PPTP, L2TP, and BigPond. If you are unsure of your connection method, please contact your Internet Service Provider.

Note: If using the PPPoE option, you will need to remove or disable any PPPoE client software on your computers.

ACCESS POINT MODE

Use this to disable NAT on the router and turn it into an Access Point.

Enable Access Point Mode

INTERNET CONNECTION TYPE

Choose the mode to be used by the router to connect to the Internet.

My Internet Connection is :

RUSSIA PPPOE (DUAL ACCESS)

Enter the information provided by your Internet Service Provider (ISP).

Dynamic PPPoE
 Static PPPoE

User Name :

Password :

Retype Password :

Service Name : (optional)

IP Address :

MAC Address : - - - - - (optional)

Receive DNS from ISP
 Enter DNS Manually

Primary DNS Address :

Secondary DNS Address : (optional)

Maximum Idle Time : Minutes

MTU :

Connect mode select : Always Manual Connect-on demand

Helpful Hints...

- **Internet Connection:** When configuring the router to access the Internet, be sure to choose the correct **Internet Connection Type** from the drop down menu. If you are unsure of which option to choose, please contact your Internet Service Provider (ISP).
- **Support:** If you are having trouble accessing the Internet through the router, double check any settings you have entered on this page and verify them with your ISP if needed.

10. Зліва бачимо картинку «Internet Online». Ви підключені до Інтернету

Налаштовуємо WI-FI

11. Налаштовуємо WI-FI. Закладка Setup (Установка), меню Wireless Setup (Установка безпроводної мережі).

Product Page : DIR-300 Firmware Version : 1.03

D-Link®

DIR-300	SETUP	ADVANCED	MAINTENANCE	STATUS	HELP
<ul style="list-style-type: none"> Internet Setup <li style="background-color: #f4a460;">Wireless Setup LAN Setup Time and Date Parental Control Logout <div style="margin-top: 10px;"> Internet Online <input type="button" value="Reboot"/> </div>	<div style="background-color: #f4a460; padding: 2px; margin-bottom: 5px;">WIRELESS CONNECTION</div> <p>There are 2 ways to setup your wireless connection. You can use the Wireless Connection Setup wizard or you can manually configure the connection.</p> <p>Please note that changes made on this section will also need to be duplicated to your wireless clients and PC.</p> <div style="background-color: #333; color: white; padding: 2px; margin-bottom: 5px;">WIRELESS CONNECTION SETUP WIZARD</div> <p>If you would like to utilize our easy to use Web-based Wizard to assist you in connecting your new D-Link Systems Wireless Router to the Internet, click on the button below.</p> <p style="text-align: center;"><input type="button" value="Wireless Connection Setup Wizard"/></p> <p>Note: Before launching the wizard, please make sure you have followed all steps outlined in the Quick Installation Guide included in the package.</p> <div style="background-color: #333; color: white; padding: 2px; margin-bottom: 5px;">MANUAL WIRELESS CONNECTION OPTIONS</div> <p>If you would like to configure the Internet settings of your new D-Link Router manually, then click on the button below.</p> <p style="text-align: center;"><input type="button" value="Manual Wireless Connection Setup"/></p>				<p>Helpful Hints..</p> <ul style="list-style-type: none"> If you are new to wireless networking and have never configured a wireless router before, click on Wireless Connection Setup Wizard and the router will guide you through a few simple steps to get your wireless network up and running. If you consider yourself an advanced user and have configured a wireless router before, click Manual Wireless Connection Setup to input all the settings manually.

12. Нажимаем кнопку Manual Wireless Connection Setup Wizard (Ручная установка беспроводного соединения).

13. Вводим імя безпровідної мережі (Наприклад: dlink300). У пункті Wireless Security mode вибравши Enable WEP Wireless Security (basic) включаємо шифрування. Обираємо тип шифрування ASCII. Вводимо ключ, який буде запитувати з'єднання під час підключення до мережі.

Натискаємо Save Settings.

DIR-300 //	SETUP	ADVANCED	MAINTENANCE	STATUS	HELP
Internet Setup Wireless Setup LAN Setup Time and Date Parental Control Logout Reboot	<h3>WIRELESS NETWORK</h3> <p>Use this section to configure the wireless settings for your D-Link router. Please note that changes made on this section may also need to be duplicated on your wireless client.</p> <p>To protect your privacy you can configure wireless security features. This device supports three wireless security modes including: WEP, WPA and WPA2.</p> <p> <input type="button" value="Save Settings"/> <input type="button" value="Don't Save Settings"/> </p> <hr/> <h3>WI-FI PROTECTED SETUP (ALSO CALLED WCN 2.0 IN WINDOWS VISTA)</h3> <p> Enable : <input checked="" type="checkbox"/> Current PIN : 11577619 <input type="button" value="Generate New PIN"/> <input type="button" value="Reset PIN to Default"/> Wi-Fi Protected Status : Enabled / Configured <input type="button" value="Reset to Unconfigured"/> <input type="button" value="Add Wireless Device with WPS"/> </p> <hr/> <h3>WIRELESS NETWORK SETTINGS</h3> <p> Enable Wireless : <input checked="" type="checkbox"/> Wireless Network Name : <input type="text" value="dlink300"/> (Also called the SSID) Enable Auto Channel Selection : <input checked="" type="checkbox"/> Wireless Channel : <input type="text" value="6"/> Transmission Rate : <input type="text" value="Best (automatic)"/> (Mbit/s) WMM Enable : <input type="checkbox"/> (Wireless QoS) Enable Hidden Wireless : <input type="checkbox"/> (Also called the SSID Broadcast) </p> <hr/> <h3>WIRELESS SECURITY MODE</h3> <p>Security Mode : <input type="text" value="Enable WEP Wireless Security (basic)"/></p> <hr/> <h3>WEP</h3> <p>WEP is the wireless encryption standard. To use it you must enter the same key(s) into the router and the wireless stations. For 64 bit keys you must enter 10 hex digits into each key box. For 128 bit keys you must enter 26 hex digits into each key box. A hex digit is either a number from 0 to 9 or a letter from A to F. For the most secure use of WEP set the authentication type to "Shared Key" when WEP is enabled.</p> <p>You may also enter any text string into a WEP key box, in which case it will be converted into a hexadecimal key using the ASCII values of the characters. A maximum of 5 text characters can be entered for 64 bit keys, and a maximum of 13 characters for 128 bit keys.</p> <p> Authentication : <input type="text" value="Open"/> WEP Encryption : <input type="text" value="ASCII"/> Default WEP Key : <input type="text" value="WEP Key 1"/> WEP Key : <input type="text" value="12345"/> (5 ASCII or 10 HEX) </p> <p> <input type="button" value="Save Settings"/> <input type="button" value="Don't Save Settings"/> </p>				<h3>Helpful Hints..</h3> <ul style="list-style-type: none"> • Wi-Fi Protected Setup provides a more intuitive way of setting up wireless security between the router and the wireless client. Make sure the wireless card supports such feature or uses a certified Windows Vista driver in order to take advantage of this feature. • Changing your Wireless Network Name is the first step in securing your wireless network. We recommend that you change it to a familiar name that does not contain any personal information. • Enabling Hidden Mode is another way to secure your network. With this option enabled, no wireless clients will be able to see your wireless network when they perform scan to see what's available. In order for your wireless devices to connect to your router, you will need to manually enter the Wireless Network Name on each device. • If you have enabled Wireless Security, make sure you write down WEP Key or Passphrase that you have configured. You will need to enter this information on any wireless device that you connect to your wireless network.
WIRELESS					

Налаштування завершено!